



INSTRUCTION BULLETIN

No. 9045136
Machine: S16
Published: 06-2021
Rev. 00

NOTE: DO NOT DISCARD the Parts List from the Instruction Bulletin. Place the Parts List in the appropriate place in the machine manual for future reference. Retaining the Parts List will make it easier to reorder individual parts and will save the cost of ordering an entire kit.

NOTE: Numbers in parenthesis () are reference numbers for parts listed in Bill of Materials.

Installation instructions for **kit number 9045102**

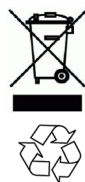
Kit installation must be performed by TennantTrue[®] service or an authorized service provider.

SYNOPSIS:

This kit contains the parts needed to install the optional left side brush assembly on S16 sweepers. Please follow step-by-step instructions.

SPECIAL TOOLS / CONSIDERATIONS: NONE

(Estimated time to complete: 1.5 hours)



PROTECT THE ENVIRONMENT

Please dispose of packaging materials, used machine components such as batteries and fluids in an environmentally safe way according to local waste disposal regulations.

Always remember to recycle.

PREPARATION:

NOTE: Only authorized Tennant Service Personnel can install this left side brush kit onto the S16 sweeper.

FOR SAFETY: Before leaving or servicing machine, stop on level surface, turn off machine, and remove key.

1. Disconnect the battery cable from the machine.



WARNING: Always disconnect battery cables from machine before working on electrical components.

2. Place chocks behind both rear tires of the machine.

3. Jack up the front end of the machine enough to access the area where the optional left side brush is to be installed. Place jack stands under the machine and lower the machine onto the jack stands. See *MACHINE JACKING* in the *MAINTENANCE* section of the *OPERATOR MANUAL*.

FOR SAFETY: When servicing machine, block machine tires before jacking machine up. Use a hoist or jack that will support the weight of the machine. Jack machine up at designated locations only. Support machine with jack stands.

INSTALLATION:

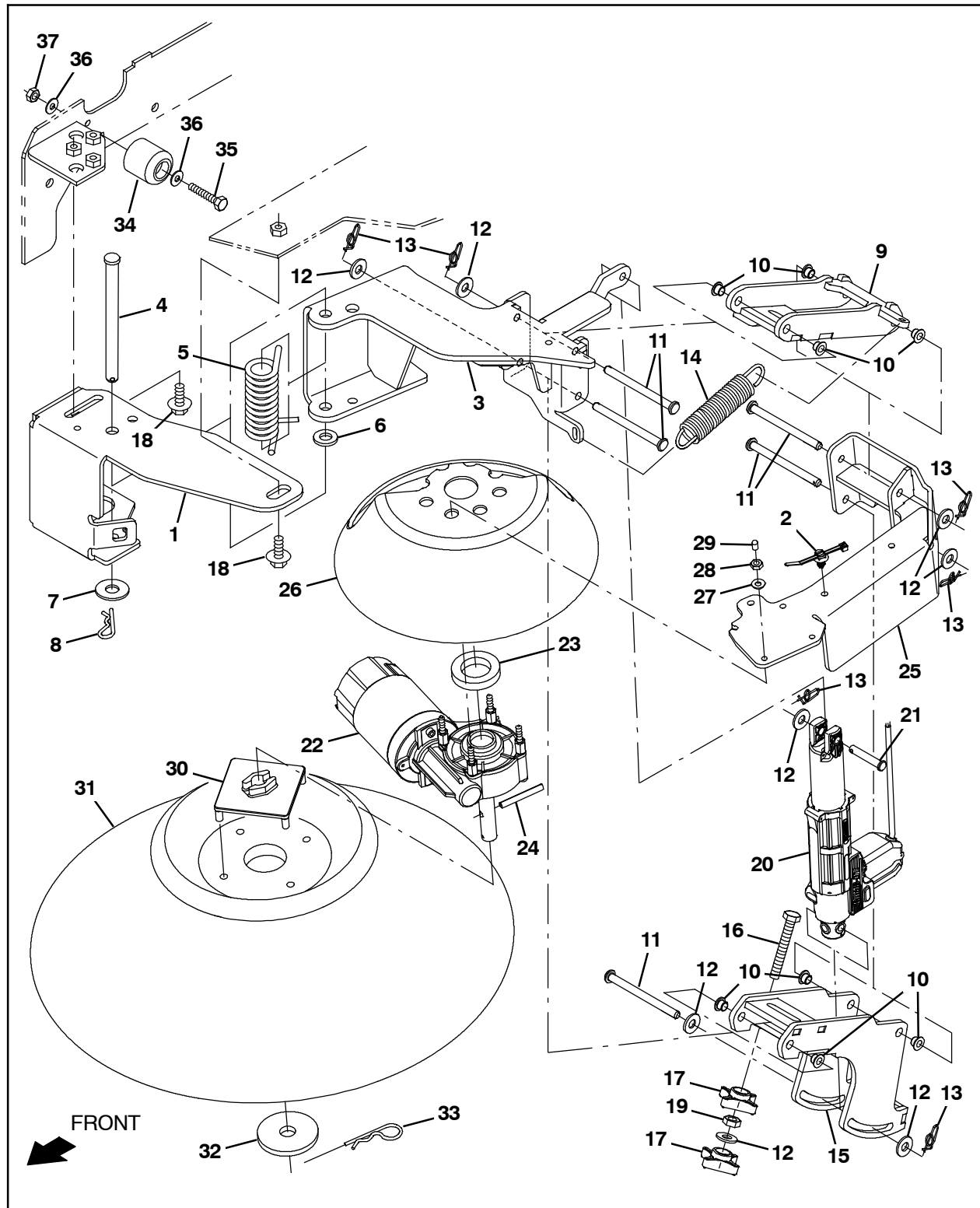


FIG. 1

NOTE: If necessary, the brush drive motor (22) and side brush guard (26) can be removed from the left side brush assembly to make installation easier. Set all removed hardware and components aside if removing before installation. (Fig. 1)

1. Use one M6 hex screw (35), two flat washers (36), and one M6 hex nut (37) to install the rubber bumper (34) onto the frame of the machine. (Fig. 1)
2. Compress the torsion spring (5) and insert a screw driver through the left brush channel bracket (1) and left brush pivot bracket (3) to secure. (Fig. 1/Fig. 2)



FIG. 2

3. Use three SEMS M8 hex screws (18) to install the left side brush assembly onto the frame of the machine. (Fig. 1)
4. Reinstall the brush drive motor (22), side brush guard (26), and reconnect the side sweep harness (39) to the brush drive motor if these items were removed before installation. (Fig. 1/Fig. 4/Fig. 7)

5. Connect the side sweep harness (39) to the main wire harness. (Fig. 1/Fig. 4/Fig. 7)
6. Ensure the side sweep harness (39) is securely connected to the actuator (20) cable and brush drive motor (22) cable. (Fig. 1/Fig. 4/Fig. 7)
7. Install the brush (31) onto the left side brush assembly. (Fig. 1)
8. Jack the machine up off the jack stands, remove the jack stands from under the machine, and lower the machine to the floor.
9. Completely remove the front access panel from the steering channel to access the circuit breaker bracket. Set the front access panel and hardware aside. (Fig. 3)



FIG. 3

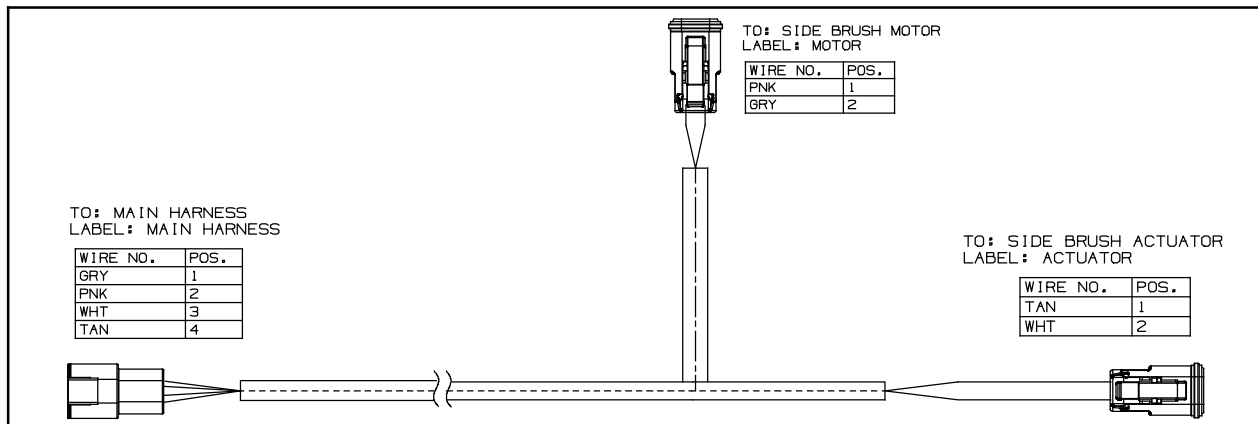


FIG. 4

10. Remove/loosen hardware securing the circuit breaker bracket onto the machine enough to access wire harness connections located behind the bracket. (Fig. 5/Fig. 6)
11. Insert a 15- Amp circuit breaker (38) into circuit breaker location CB12 in the circuit breaker bracket. (Fig. 5/Fig. 6)

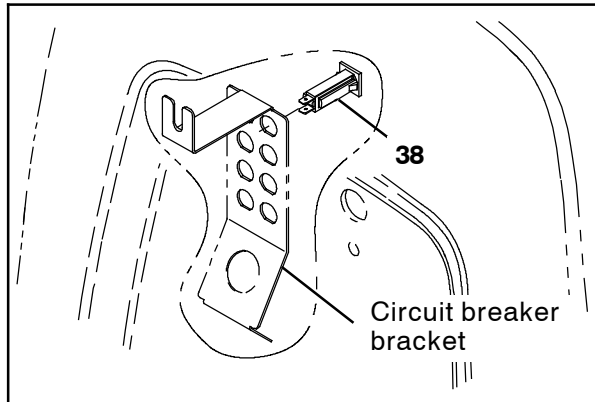


FIG. 5

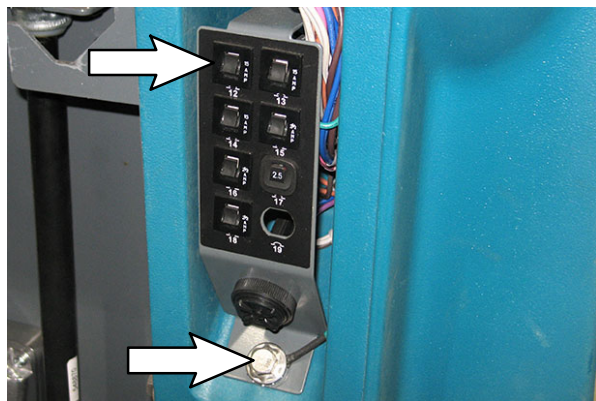


FIG. 6

12. Connect the main wire harness to the 15- Amp circuit breaker (38) installed in the previous step. (Fig. 5/Fig. 6/Fig. 7)

13. Reinstall/tighten hardware previously removed/loosened from the circuit breaker bracket.
14. Reinstall the front access panel onto the steering channel.
15. Reconnect the battery cable to the machine.
16. Turn on the machine. Press the left side brush button and drive machine forward. The left side brush should lower and begin rotating when the machine is driven forward. Press the left side brush button to turn off left side brush. The left side brush should stop rotating and raise completely from the floor.
17. Check and adjust the left side brush pattern. Refer to *CHECKING THE SIDE BRUSH PATTERN(S)* and *ADJUSTING THE SIDE BRUSH PATTERN(S)* in the Maintenance Section of the Operator manual for instructions how to check and adjust the side brush pattern.

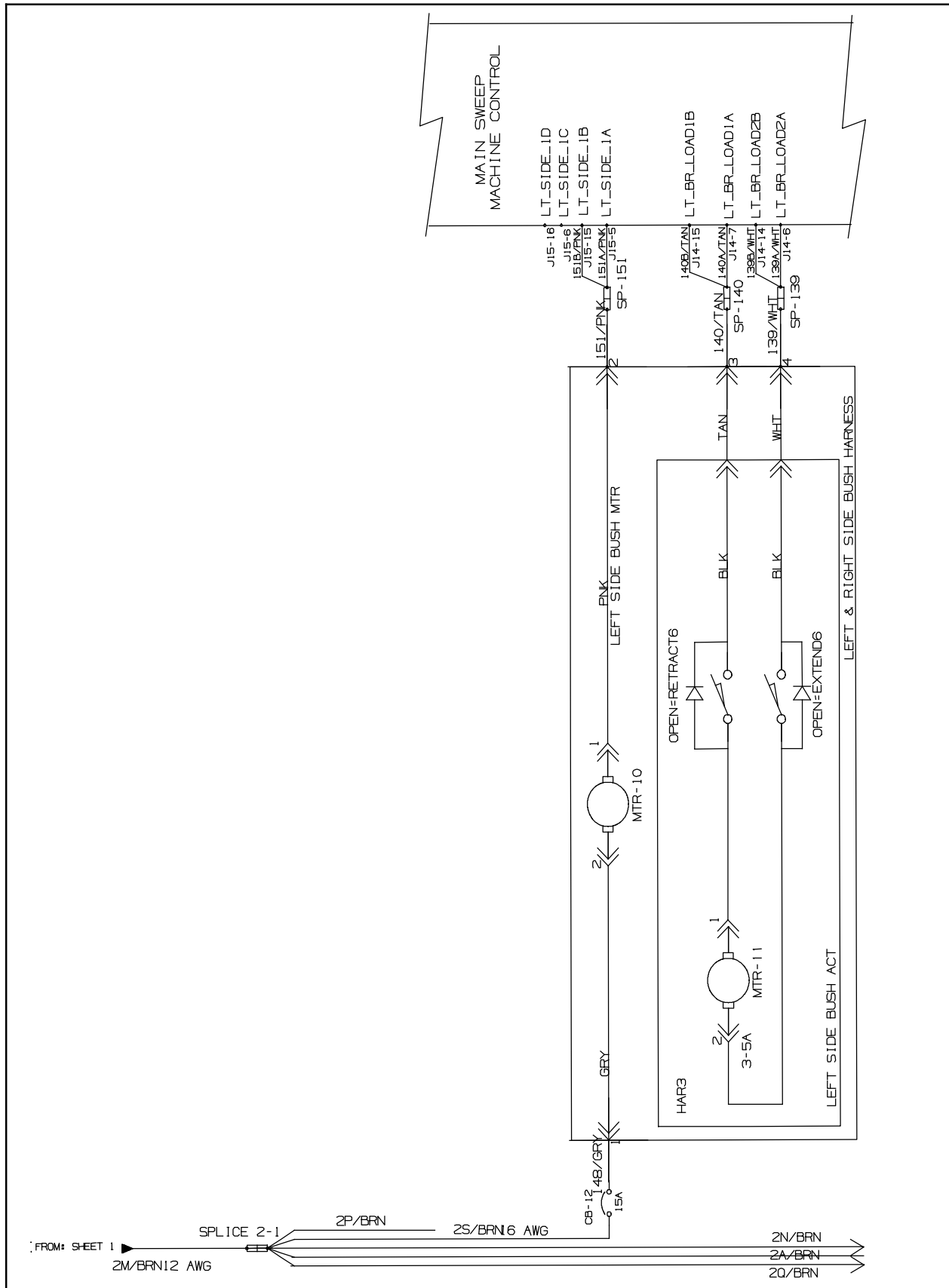


FIG. 7

Bill Of Materials For Brush Kit, Swp, Side, LH, DI - 9045102

Ref.	Tennant Part No.	Description	Qty.
1	1252359	Bracket, Channel, Brush, LH	1
2	1210807	Wire, Tie [W/.25" Fir Tree Clip]	7
3	1252109	Bracket Wldt, Brush, Pivot, LH	1
4	51225- 1	Pin, Clevis, 0.50d X 6.00l	1
5	1251331	Spring, Tors, 0.87id .25wir 13.0coil, RH	1
6	140127	Washer, Thrust, 0.51b 1.00d 0.12w, Brz	1
7	41619	Washer, Flat, 0.56b 1.38d .11, SS	1
8	44906	Pin, Cotter, Hair, 0.38d .093 Wir	1
9	1252133	Arm Wldt, Upper, Link, LH	1
10	1251107	Bushing, Flng, 8mmb 10mmd 7.5mml	8
11	1252353	Pin, Clevis, 8mmd X 100mml [304ss]	5
12	01685	Washer, Flat, 0.38b 0.88d .08, SS	8
13	1216647	Pin, Cotter, Hair, 0.38d .054 Wir	6
14	1252317	Spring, Extn, 1.05od 0.13wir 5.00l	1
15	1252134	Lift Wldt, Lower, Link, LH	1
16	1014163	Screw, Hex, M8 X 1.25 X 60, Fl, SS	1
17	1213677	Knob, Star, 2.00od 4ear M8x1.25 [Yel]	2
18	1072628	Screw, Hex, M8 X 1.25 X 25, SS, SEMS	3
19	200101017	Nut, Hex, Jam, M8 X 1.25	1
20	1237208	Actuator, 36vdc, 60mm Stroke	1
21	81581	Pin, Clevis, 0.31d X 1.75l	1
22	1246330	Motor, Ele, 36vdc 0070rpm 0.16hp Gear	1
23	1250678	Spacer, Brush	1
24	11398	Pin, Roll, .250d X 2.00l, .250/.256	1
25	1252110	Motor Wldt, Mtg, Brush, LH	1
26	1238366	Guard, Brush, Side	1
27	19066	Washer, Flat, 0.25b 0.56d .05, Pl, 10	4
28	06549	Nut, Hex, M5 X 0.80 X 16, 8.8	4
29	1227460	Cover, Thread, M5	4
30	1017441	Plate, Adapter, Brush	1
31	1225549	Brush, Disk, Swp, 20.0d, Polypropylene	1
32	1248278	Washer, Flat, 0.66b 2.50d .12, SS	1
33	02942	Pin, Hair, Cotter, 0.62d .120 Wir	1
34	44851	Bumper, Rbr, 1.5d 1.50th 0.28h	1
35	06948	Screw, Hex, M6 X 1.00 X 45, 8.8	1
36	01684	Washer, Flat, 0.27b 0.69d .05, SS	2
37	08712	Nut, Hex, Lock, M6 X 1.00, NI, SS	1
38	1064188	Circuit Breaker, 15.0a, Resettable	1
39	1076419	Harness, Ele, Sweep, Side [S16]	1

TENNANT COMPANY
10400 Clean Street
Eden Prairie, MN 55344- 2650